

# State of Wyoming Corner Record

(In compliance with the CORNER PERPETUATION AND FILING ACT, Wyoming Statutes, 1977, Section 36-11-101, et. seq., and the Rules and Regulations of the Board of Registration for Professional Engineers and Professional Land Surveyors)

Reverse side of this form may be used if more space is needed.

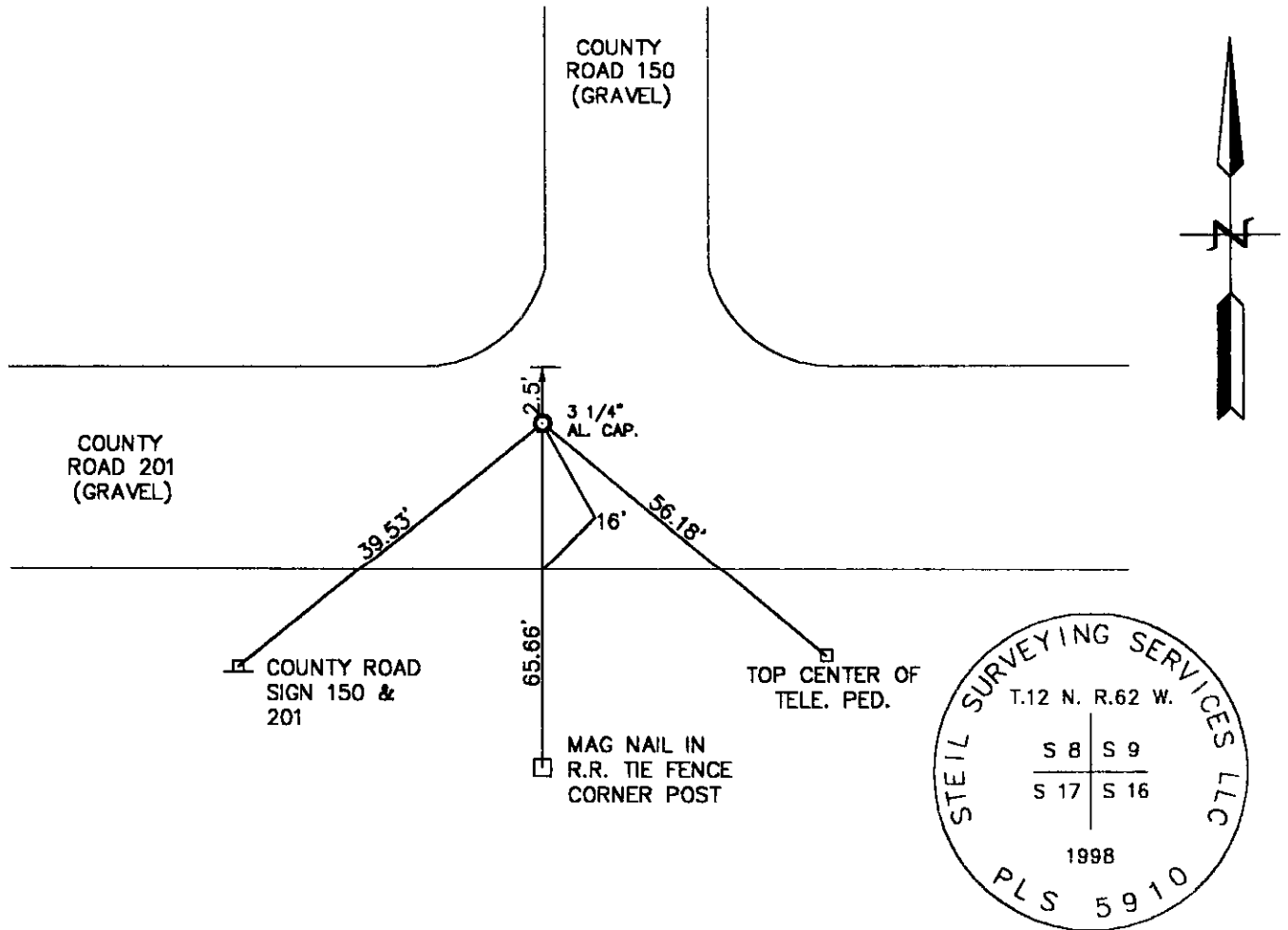
Record of original survey and citation of source of historical information (if corner is lost or obliterated). Description of corner monumentation evidence found and/or monument and accessories established to perpetuate the location of this corner. Sketch of relative location of monument, accessories, and reference points with course and distance to adjacent corner(s) (if determined in this survey). Method and rationale for reestablishment of lost or obliterated corner.

**GLO RECORD:** SET AN IRON POST, 3' LONG, 2 1/2" IN DIAMETER, 2 1/2' IN THE GROUND, FOR CORNER OF SECTIONS 8, 9, 16, AND 17.

**MONUMENT FOUND:** FOUND ORIGINAL CORNER LYING HORIZONTAL IN THE ROAD. ROAD GRADER DESTROYED MONUMENT.

**MONUMENT SET:** RESET A 5/8" X 24" REBAR WITH A 3 1/4" ALUMINUM CAP 0.50' BELOW SURFACE OF COUNTY ROAD 201 AND COUNTY ROAD 150. RESET MONUMENT BY DOUBLE PROPORTION. CAP MARKED AS SHOWN BELOW.

**REFERENCES:** MONUMENT LIES ON LINE WITH THE WEST EDGE OF COUNTY ROAD 150, AND 2.5' SOUTH OF THE NORTH EDGE COUNTY ROAD 201. SET A MAG NAIL FOR REFERENCE.



Date of Field Work: 2-3-98 Office Reference: 98051

Firm/Agency, Address

STEIL SURVEYING SERVICES, LLC.

1102 WEST 19th STREET

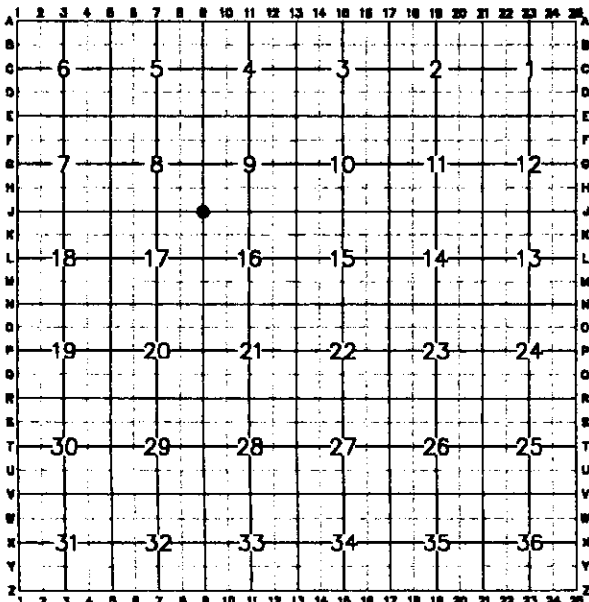
CHEYENNE WY 82001

Telephone Number: (307) 634-7273

This corner record was prepared by me or under my direction and supervision.  
SEAL & SIGNATURE

*[Handwritten Signature]*  
12/1/00

**CROSS INDEX DIAGRAM**



Corner Name: NE SECTION CORNER Section: 17 T.12N. R.62W.; 6th P.M. Cross-Index No.: J-9  
SBRPEPLS/PLSW: March 1994